

Frameless - Bifacial - Transparency 55%



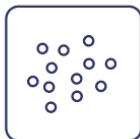
Self-cleaning effect



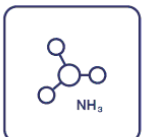
10 500 Pa  
Extreme load resistance



Fire class A



Salt mist resistance



Ammonia resistance



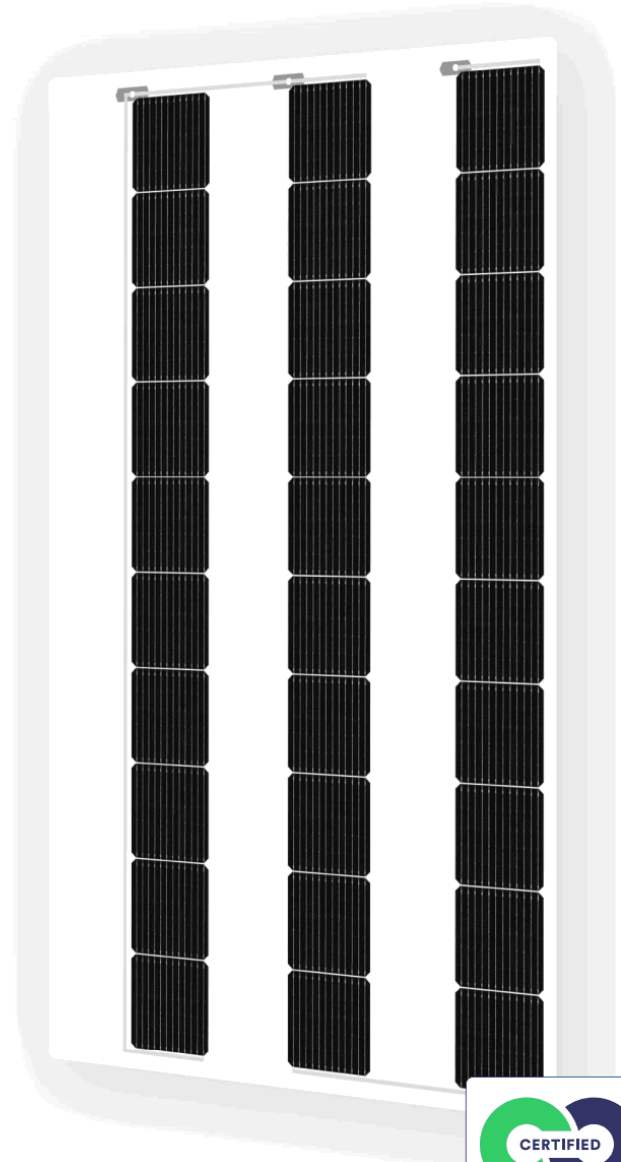
35% of recycled glass content



98% recyclable



Hail resistance class 4



Positive sorting up to +5W

Front side ⚡ 180 W

Deutsches Institut für Bautechnik

DIBt



**30** Year product warranty

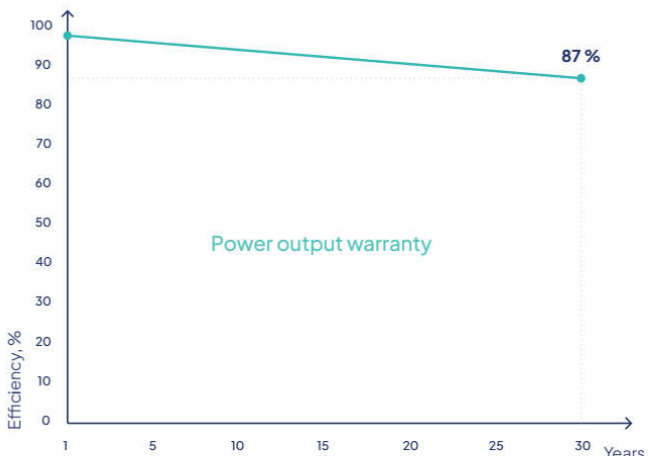
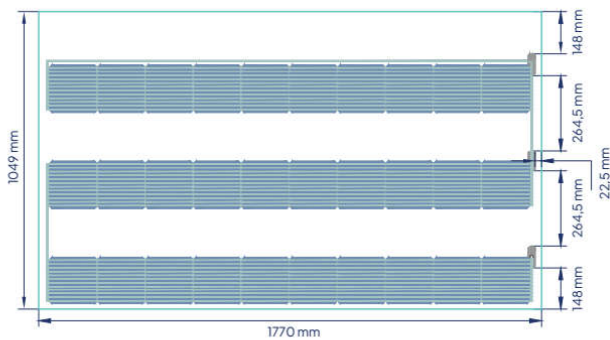
**87%** Power warranty

**30** Year efficiency warranty

Electrical data (STC*)	
Maximum power (W)	180
Cell technology	Bifacial
Open circuit voltage ( $V_{oc}/V$ )	19,90
Short circuit current ( $I_{sc}/A$ )	11,18
Max power voltage ( $V_{mpp}/V$ )	16,95
Max power current ( $I_{mpp}/A$ )	10,62
Module efficiency ( $\eta$ )	9,69 %
Max system voltage (V)	1000
Max current (A)	20
Power tolerance	0/+5W

\*Under standard test conditions (STC) of irradiance of 1000W/sq.m., spectrum AM1.5 and cell temperature of 25°C. Flash testing measurement accuracy of +/-5%.

Warranty	
30 years product warranty	
30 years efficiency warranty	
First year degradation (%)	2 %
Annual degradation (%)	0.379 %
Power in year 30 (%)	87 %



Temperature ratings	
Current temperature coefficient ( $\alpha$ )	+0.036% / °C
Voltage temperature coefficient ( $\beta$ )	-0.265% / °C
Power temperature coefficient ( $\delta$ )	-0.362% / °C
Nominal operating module temperature	46 °C
Mechanical data	
Dimensions (LxWxH) (mm)	1770x1049x7.1
Dimensions with edge sealing (LxWxH) (mm)	1778±5x1057±5x7.1
Weight (kg)	30
Front glass (mm)	3
Back glass (mm)	3, transparent
Cell Size (mm)	166x166
Busbars	9
Transparency %	55
Cell configuration	3x10
Frame	Frameless
Rated operating altitude	Up to 2000 m
Operating temperature (°C)	-40 ÷ +85
Maximum test load (wind/snow) (Pa)	5400/10500
Junction box / IP class	Split junction box / IP68
Cable cross section size (mm <sup>2</sup> )	4
Cable length	1,2 m
Bypass diodes	3
Connector	MC4 compatible

Packing information	
Modules per pallet	25 pcs
Dimensions of a pallet (LxWxH)	1900x1170x1070 mm
Weight of a pallet (gross)	855 kg
Pallets per 13.6 m truck	28 pcs
Modules per 13.6 m truck	700 pcs

Certifications	
IEC 61215:2021; IEC 61730:2016	
Cradle to Cradle (C2C)	Gold level
abZ/aBG	Overhead Glazing
IEC 62716:2013	Ammonia corrosion testing
IEC 61701:2020	Salt mist corrosion testing
IEC 61215-2:2016	39mm hailstone - Hail resistance class 4 (HW4)
ISO 9001:2015	Quality management systems
ISO 14001:2015	Environmental management systems
ISO 45001:2018	Occupational health and safety
SundaHus	A level assessment
Produced using 100% renewable energy	
Membership at Svensk Solenergi	

