



SOLAR MAKERS.r.l.

www.ilografabaccchella.it

ADVANTAGES

FOR FARMERS:

- The PV panel works as an automatic climate control system based on the seasons, avoiding the use of screens to increase the shading in the summer period.
- Cost reduction using the same land and greenhouse structure to realize the PV installation.
- Sustainable agriculture: the energy necessary to the farmer is self generated, reducing costs and pollution related to agricultural production.

FOR INVESTORS:

- Enables to build large PV installation without subtract land from the agriculture.
- No problem in obtaining the necessary authorizations for the construction of the photovoltaic plant (no environmental impact).
- More revenue coming from the same land (electricity plus agriculture, even renting the greenhouse to local farmers).

For more information:

Solarmaker S.r.l.

Via Papa Giovanni XXIII 13/6 - 17023 Ceriale (SV), Italy
Tel +39 348 5252035 - Fax +39 (0) 182 621019
info@solarmaker.it - www.solarmaker.it



SOLAR MAKERS.r.l.

ECLIPSE

The Photovoltaic Panel
For Greenhouses

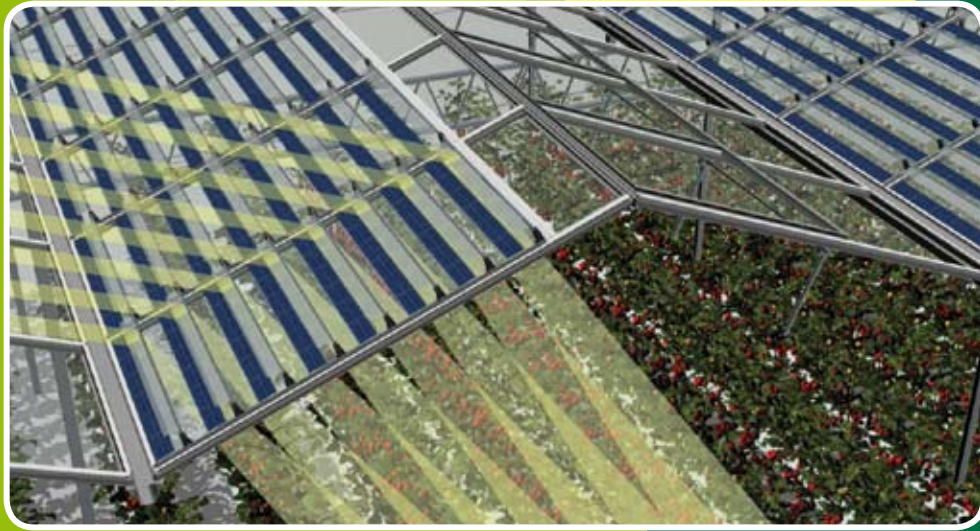
**A GREENHOUSE
AGAINST THE
GREENHOUSE EFFECT!**

IT Patent 0001359221
EU Patent EP 1688033
IT Patent 0001372647
US Patent 8,061,077
EU Patent EP 07822524.0

WINTER

The sun light is diverted inside the greenhouse, allowing the cultivation.

The PV panel produce electricity as any other PV panel



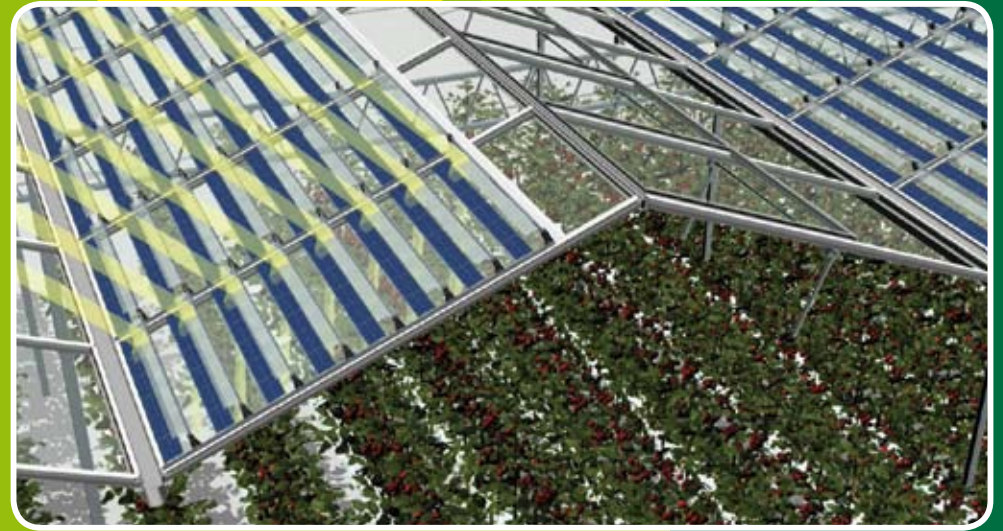
No moving parts.

The system is based on the variation of the height of the sun during the different seasons.

SUMMER

The sun light is diverted on the PV cells, the excess of solar energy is converted automatically into more electricity.

The PV panel produce more electricity than any other standard fixed panel.



Thanks to particular optical lenses, the photovoltaic panel increases the shading inside the greenhouse just in a certain period of the year, following the same principle of solar eclipses.

